

RoHS Test Report

Applicant : Xuzhou Eagled Electronic Technology CO.,LTD
Address : B7 Building, National Security Science and Technology Park, Lijiang Road, Tongshar District, Xuzhou City, Jiangsu Province, China
Manufacturer : Xuzhou Eagled Electronic Technology CO.,LTD
Address : B7 Building, National Security Science and Technology Park, Lijiang Road, Tongshar District, Xuzhou City, Jiangsu Province, China

The following sample(s) was /were submitted and identified on behalf of the clients as:

Sample Name : LED DRIVER
Trade Mark : EAGLED
Model Number : ZF120A-1202000
: ZF120A-5W,ZF120A-10W,ZF120A-18W,ZF120A-35W,ZF120A-50W
Sample Received Date : Dec.10, 2021
Testing Period : Dec.10, 2021Dec.16, 2021
Test Requested : Selected test (s) in the selected parts as requested by client with the RoHS Directive 2011/65/EU and its subsequent amendments EU No. 2015/863
Test Method : Please refer to next page(s).
Test Result : Please refer to next page(s).

Prepared by: _____

Alex Li
Alex Li / Engineer

Approved & Authorized Signer: _____

Jack Yang
Jack Yang / Manager



RoHS Test Report

Sample Description:

No.	Description	Name
1	PCB	PCB
2	IC	IC
3	LED	LED
4	Tin	Tin
5	Capacitor	Capacitor
6	Resistor	Resistor
7	Plastics	Plastics
8	Diode	Diode
9	DC Port	DC Port
10	Inductor	Inductor
11	Transformer	Transformer
12	Copper wire	Copper wire
13	Metal	Metal



RoHS Test Report

Test Result (No. 1):

Test Item(s)	Unit	Test Method (Reference)	Result	MDL	Limit
Cadmium(Cd)	mg/kg	IEC 62321-5:2013, ICP-AES	N.D.	2	100
Lead(Pb)	mg/kg	IEC 62321-5:2013, ICP-AES	N.D.	2	1000
Mercury(Hg)	mg/kg	IEC 62321-4:2013, ICP-AES	N.D.	2	1000
Hexavalent Chromium(CrVI)	mg/kg	IEC 62321:2013, UV-Vis	N.D.	2	1000
Sum of PBBs	mg/kg	IEC 62321:2013, GC-MS	N.D.	--	1000
Monobromobiphenyl	mg/kg	IEC 62321:2013, GC-MS	N.D.	5	--
Dibromobiphenyl	mg/kg	IEC 62321:2013, GC-MS	N.D.	5	--
Tribromobiphenyl	mg/kg	IEC 62321:2013, GC-MS	N.D.	5	--
Tetrabromobiphenyl	mg/kg	IEC 62321:2013, GC-MS	N.D.	5	--
Pentabromobiphenyl	mg/kg	IEC 62321:2013, GC-MS	N.D.	5	--
Hexabromobiphenyl	mg/kg	IEC 62321:2013, GC-MS	N.D.	5	--
Heptabromobiphenyl	mg/kg	IEC 62321:2013, GC-MS	N.D.	5	--
Octabromobiphenyl	mg/kg	IEC 62321:2013, GC-MS	N.D.	5	--
Nonabromobiphenyl	mg/kg	IEC 62321:2013, GC-MS	N.D.	5	--
Decabromobiphenyl	mg/kg	IEC 62321:2013, GC-MS	N.D.	5	--
Sum of PBDEs	mg/kg	IEC 62321:2013, GC-MS	N.D.	--	1000
Monobromodiphenyl ether	mg/kg	IEC 62321:2013, GC-MS	N.D.	5	--
Dibromodiphenyl ether	mg/kg	IEC 62321:2013, GC-MS	N.D.	5	--
Tribromodiphenyl ether	mg/kg	IEC 62321:2013, GC-MS	N.D.	5	--
Tetrabromodiphenyl ether	mg/kg	IEC 62321:2013, GC-MS	N.D.	5	--
Pentabromodiphenyl ether	mg/kg	IEC 62321:2013, GC-MS	N.D.	5	--
Hexabromodiphenyl ether	mg/kg	IEC 62321:2013, GC-MS	N.D.	5	--
Heptabromodiphenyl ether	mg/kg	IEC 62321:2013, GC-MS	N.D.	5	--
Octabromodiphenyl ether	mg/kg	IEC 62321:2013, GC-MS	N.D.	5	--
Nonabromodiphenyl ether	mg/kg	IEC 62321:2013, GC-MS	N.D.	5	--
Decabromodiphenyl ether	mg/kg	IEC 62321:2013, GC-MS	N.D.	5	--
DEHP	mg/kg	EN 14372:2005, GC-MS	N.D.	5	1000
DBP	mg/kg	EN 14372:2005, GC-MS	N.D.	5	1000
BBP	mg/kg	EN 14372:2005, GC-MS	N.D.	5	1000
DIBP	mg/kg	EN 14372:2005, GC-MS	N.D.	5	1000



RoHS Test Report

Test Result (No. 2):

Test Item(s)	Unit	Test Method (Reference)	Result	MDL	Limit
Cadmium(Cd)	mg/kg	IEC 62321-5:2013, ICP-AES	N.D.	2	100
Lead(Pb)	mg/kg	IEC 62321-5:2013, ICP-AES	N.D.	2	1000
Mercury(Hg)	mg/kg	IEC 62321-4:2013, ICP-AES	N.D.	2	1000
Hexavalent Chromium(CrVI)	mg/kg	IEC 62321:2013, UV-Vis	N.D.	2	1000
Sum of PBBs	mg/kg	IEC 62321:2013, GC-MS	N.D.	--	1000
Monobromobiphenyl	mg/kg	IEC 62321:2013, GC-MS	N.D.	5	--
Dibromobiphenyl	mg/kg	IEC 62321:2013, GC-MS	N.D.	5	--
Tribromobiphenyl	mg/kg	IEC 62321:2013, GC-MS	N.D.	5	--
Tetrabromobiphenyl	mg/kg	IEC 62321:2013, GC-MS	N.D.	5	--
Pentabromobiphenyl	mg/kg	IEC 62321:2013, GC-MS	N.D.	5	--
Hexabromobiphenyl	mg/kg	IEC 62321:2013, GC-MS	N.D.	5	--
Heptabromobiphenyl	mg/kg	IEC 62321:2013, GC-MS	N.D.	5	--
Octabromobiphenyl	mg/kg	IEC 62321:2013, GC-MS	N.D.	5	--
Nonabromobiphenyl	mg/kg	IEC 62321:2013, GC-MS	N.D.	5	--
Decabromobiphenyl	mg/kg	IEC 62321:2013, GC-MS	N.D.	5	--
Sum of PBDEs	mg/kg	IEC 62321:2013, GC-MS	N.D.	--	1000
Monobromodiphenyl ether	mg/kg	IEC 62321:2013, GC-MS	N.D.	5	--
Dibromodiphenyl ether	mg/kg	IEC 62321:2013, GC-MS	N.D.	5	--
Tribromodiphenyl ether	mg/kg	IEC 62321:2013, GC-MS	N.D.	5	--
Tetrabromodiphenyl ether	mg/kg	IEC 62321:2013, GC-MS	N.D.	5	--
Pentabromodiphenyl ether	mg/kg	IEC 62321:2013, GC-MS	N.D.	5	--
Hexabromodiphenyl ether	mg/kg	IEC 62321:2013, GC-MS	N.D.	5	--
Heptabromodiphenyl ether	mg/kg	IEC 62321:2013, GC-MS	N.D.	5	--
Octabromodiphenyl ether	mg/kg	IEC 62321:2013, GC-MS	N.D.	5	--
Nonabromodiphenyl ether	mg/kg	IEC 62321:2013, GC-MS	N.D.	5	--
Decabromodiphenyl ether	mg/kg	IEC 62321:2013, GC-MS	N.D.	5	--
DEHP	mg/kg	EN 14372:2005, GC-MS	N.D.	5	1000
DBP	mg/kg	EN 14372:2005, GC-MS	N.D.	5	1000
BBP	mg/kg	EN 14372:2005, GC-MS	N.D.	5	1000
DIBP	mg/kg	EN 14372:2005, GC-MS	N.D.	5	1000



RoHS Test Report

Test Result (No. 3):

Test Item(s)	Unit	Test Method (Reference)	Result	MDL	Limit
Cadmium(Cd)	mg/kg	IEC 62321-5:2013, ICP-AES	N.D.	2	100
Lead(Pb)	mg/kg	IEC 62321-5:2013, ICP-AES	N.D.	2	1000
Mercury(Hg)	mg/kg	IEC 62321-4:2013, ICP-AES	N.D.	2	1000
Hexavalent Chromium(CrVI)	mg/kg	IEC 62321:2013, UV-Vis	N.D.	2	1000
Sum of PBBs	mg/kg	IEC 62321:2013, GC-MS	N.D.	--	1000
Monobromobiphenyl	mg/kg	IEC 62321:2013, GC-MS	N.D.	5	--
Dibromobiphenyl	mg/kg	IEC 62321:2013, GC-MS	N.D.	5	--
Tribromobiphenyl	mg/kg	IEC 62321:2013, GC-MS	N.D.	5	--
Tetrabromobiphenyl	mg/kg	IEC 62321:2013, GC-MS	N.D.	5	--
Pentabromobiphenyl	mg/kg	IEC 62321:2013, GC-MS	N.D.	5	--
Hexabromobiphenyl	mg/kg	IEC 62321:2013, GC-MS	N.D.	5	--
Heptabromobiphenyl	mg/kg	IEC 62321:2013, GC-MS	N.D.	5	--
Octabromobiphenyl	mg/kg	IEC 62321:2013, GC-MS	N.D.	5	--
Nonabromobiphenyl	mg/kg	IEC 62321:2013, GC-MS	N.D.	5	--
Decabromobiphenyl	mg/kg	IEC 62321:2013, GC-MS	N.D.	5	--
Sum of PBDEs	mg/kg	IEC 62321:2013, GC-MS	N.D.	--	1000
Monobromodiphenyl ether	mg/kg	IEC 62321:2013, GC-MS	N.D.	5	--
Dibromodiphenyl ether	mg/kg	IEC 62321:2013, GC-MS	N.D.	5	--
Tribromodiphenyl ether	mg/kg	IEC 62321:2013, GC-MS	N.D.	5	--
Tetrabromodiphenyl ether	mg/kg	IEC 62321:2013, GC-MS	N.D.	5	--
Pentabromodiphenyl ether	mg/kg	IEC 62321:2013, GC-MS	N.D.	5	--
Hexabromodiphenyl ether	mg/kg	IEC 62321:2013, GC-MS	N.D.	5	--
Heptabromodiphenyl ether	mg/kg	IEC 62321:2013, GC-MS	N.D.	5	--
Octabromodiphenyl ether	mg/kg	IEC 62321:2013, GC-MS	N.D.	5	--
Nonabromodiphenyl ether	mg/kg	IEC 62321:2013, GC-MS	N.D.	5	--
Decabromodiphenyl ether	mg/kg	IEC 62321:2013, GC-MS	N.D.	5	--
DEHP	mg/kg	EN 14372:2005, GC-MS	N.D.	5	1000
DBP	mg/kg	EN 14372:2005, GC-MS	N.D.	5	1000
BBP	mg/kg	EN 14372:2005, GC-MS	N.D.	5	1000
DIBP	mg/kg	EN 14372:2005, GC-MS	N.D.	5	1000



RoHS Test Report

Test Result (No. 4):

Test Item(s)	Unit	Test Method (Reference)	Result	MDL	Limit
Cadmium(Cd)	mg/kg	IEC 62321-5:2013, ICP-AES	N.D.	2	100
Lead(Pb)	mg/kg	IEC 62321-5:2013, ICP-AES	N.D.	2	1000
Mercury(Hg)	mg/kg	IEC 62321-4:2013, ICP-AES	N.D.	2	1000
Hexavalent Chromium(CrVI)	mg/kg	IEC 62321:2013, UV-Vis	N.D.	2	1000
Sum of PBBs	mg/kg	IEC 62321:2013, GC-MS	N.D.	--	1000
Monobromobiphenyl	mg/kg	IEC 62321:2013, GC-MS	N.D.	5	--
Dibromobiphenyl	mg/kg	IEC 62321:2013, GC-MS	N.D.	5	--
Tribromobiphenyl	mg/kg	IEC 62321:2013, GC-MS	N.D.	5	--
Tetrabromobiphenyl	mg/kg	IEC 62321:2013, GC-MS	N.D.	5	--
Pentabromobiphenyl	mg/kg	IEC 62321:2013, GC-MS	N.D.	5	--
Hexabromobiphenyl	mg/kg	IEC 62321:2013, GC-MS	N.D.	5	--
Heptabromobiphenyl	mg/kg	IEC 62321:2013, GC-MS	N.D.	5	--
Octabromobiphenyl	mg/kg	IEC 62321:2013, GC-MS	N.D.	5	--
Nonabromobiphenyl	mg/kg	IEC 62321:2013, GC-MS	N.D.	5	--
Decabromobiphenyl	mg/kg	IEC 62321:2013, GC-MS	N.D.	5	--
Sum of PBDEs	mg/kg	IEC 62321:2013, GC-MS	N.D.	--	1000
Monobromodiphenyl ether	mg/kg	IEC 62321:2013, GC-MS	N.D.	5	--
Dibromodiphenyl ether	mg/kg	IEC 62321:2013, GC-MS	N.D.	5	--
Tribromodiphenyl ether	mg/kg	IEC 62321:2013, GC-MS	N.D.	5	--
Tetrabromodiphenyl ether	mg/kg	IEC 62321:2013, GC-MS	N.D.	5	--
Pentabromodiphenyl ether	mg/kg	IEC 62321:2013, GC-MS	N.D.	5	--
Hexabromodiphenyl ether	mg/kg	IEC 62321:2013, GC-MS	N.D.	5	--
Heptabromodiphenyl ether	mg/kg	IEC 62321:2013, GC-MS	N.D.	5	--
Octabromodiphenyl ether	mg/kg	IEC 62321:2013, GC-MS	N.D.	5	--
Nonabromodiphenyl ether	mg/kg	IEC 62321:2013, GC-MS	N.D.	5	--
Decabromodiphenyl ether	mg/kg	IEC 62321:2013, GC-MS	N.D.	5	--
DEHP	mg/kg	EN 14372:2005, GC-MS	N.D.	5	1000
DBP	mg/kg	EN 14372:2005, GC-MS	N.D.	5	1000
BBP	mg/kg	EN 14372:2005, GC-MS	N.D.	5	1000
DIBP	mg/kg	EN 14372:2005, GC-MS	N.D.	5	1000



RoHS Test Report

Test Result (No. 5):

Test Item(s)	Unit	Test Method (Reference)	Result	MDL	Limit
Cadmium(Cd)	mg/kg	IEC 62321-5:2013, ICP-AES	N.D.	2	100
Lead(Pb)	mg/kg	IEC 62321-5:2013, ICP-AES	N.D.	2	1000
Mercury(Hg)	mg/kg	IEC 62321-4:2013, ICP-AES	N.D.	2	1000
Hexavalent Chromium(CrVI)	mg/kg	IEC 62321:2013, UV-Vis	N.D.	2	1000
Sum of PBBs	mg/kg	IEC 62321:2013, GC-MS	N.D.	--	1000
Monobromobiphenyl	mg/kg	IEC 62321:2013, GC-MS	N.D.	5	--
Dibromobiphenyl	mg/kg	IEC 62321:2013, GC-MS	N.D.	5	--
Tribromobiphenyl	mg/kg	IEC 62321:2013, GC-MS	N.D.	5	--
Tetrabromobiphenyl	mg/kg	IEC 62321:2013, GC-MS	N.D.	5	--
Pentabromobiphenyl	mg/kg	IEC 62321:2013, GC-MS	N.D.	5	--
Hexabromobiphenyl	mg/kg	IEC 62321:2013, GC-MS	N.D.	5	--
Heptabromobiphenyl	mg/kg	IEC 62321:2013, GC-MS	N.D.	5	--
Octabromobiphenyl	mg/kg	IEC 62321:2013, GC-MS	N.D.	5	--
Nonabromobiphenyl	mg/kg	IEC 62321:2013, GC-MS	N.D.	5	--
Decabromobiphenyl	mg/kg	IEC 62321:2013, GC-MS	N.D.	5	--
Sum of PBDEs	mg/kg	IEC 62321:2013, GC-MS	N.D.	--	1000
Monobromodiphenyl ether	mg/kg	IEC 62321:2013, GC-MS	N.D.	5	--
Dibromodiphenyl ether	mg/kg	IEC 62321:2013, GC-MS	N.D.	5	--
Tribromodiphenyl ether	mg/kg	IEC 62321:2013, GC-MS	N.D.	5	--
Tetrabromodiphenyl ether	mg/kg	IEC 62321:2013, GC-MS	N.D.	5	--
Pentabromodiphenyl ether	mg/kg	IEC 62321:2013, GC-MS	N.D.	5	--
Hexabromodiphenyl ether	mg/kg	IEC 62321:2013, GC-MS	N.D.	5	--
Heptabromodiphenyl ether	mg/kg	IEC 62321:2013, GC-MS	N.D.	5	--
Octabromodiphenyl ether	mg/kg	IEC 62321:2013, GC-MS	N.D.	5	--
Nonabromodiphenyl ether	mg/kg	IEC 62321:2013, GC-MS	N.D.	5	--
Decabromodiphenyl ether	mg/kg	IEC 62321:2013, GC-MS	N.D.	5	--
DEHP	mg/kg	EN 14372:2005, GC-MS	N.D.	5	1000
DBP	mg/kg	EN 14372:2005, GC-MS	N.D.	5	1000
BBP	mg/kg	EN 14372:2005, GC-MS	N.D.	5	1000
DIBP	mg/kg	EN 14372:2005, GC-MS	N.D.	5	1000



RoHS Test Report

Test Result (No. 6):

Test Item(s)	Unit	Test Method (Reference)	Result	MDL	Limit
Cadmium(Cd)	mg/kg	IEC 62321-5:2013, ICP-AES	N.D.	2	100
Lead(Pb)	mg/kg	IEC 62321-5:2013, ICP-AES	N.D.	2	1000
Mercury(Hg)	mg/kg	IEC 62321-4:2013, ICP-AES	N.D.	2	1000
Hexavalent Chromium(CrVI)	mg/kg	IEC 62321:2013, UV-Vis	N.D.	2	1000
Sum of PBBs	mg/kg	IEC 62321:2013, GC-MS	N.D.	--	1000
Monobromobiphenyl	mg/kg	IEC 62321:2013, GC-MS	N.D.	5	--
Dibromobiphenyl	mg/kg	IEC 62321:2013, GC-MS	N.D.	5	--
Tribromobiphenyl	mg/kg	IEC 62321:2013, GC-MS	N.D.	5	--
Tetrabromobiphenyl	mg/kg	IEC 62321:2013, GC-MS	N.D.	5	--
Pentabromobiphenyl	mg/kg	IEC 62321:2013, GC-MS	N.D.	5	--
Hexabromobiphenyl	mg/kg	IEC 62321:2013, GC-MS	N.D.	5	--
Heptabromobiphenyl	mg/kg	IEC 62321:2013, GC-MS	N.D.	5	--
Octabromobiphenyl	mg/kg	IEC 62321:2013, GC-MS	N.D.	5	--
Nonabromobiphenyl	mg/kg	IEC 62321:2013, GC-MS	N.D.	5	--
Decabromobiphenyl	mg/kg	IEC 62321:2013, GC-MS	N.D.	5	--
Sum of PBDEs	mg/kg	IEC 62321:2013, GC-MS	N.D.	--	1000
Monobromodiphenyl ether	mg/kg	IEC 62321:2013, GC-MS	N.D.	5	--
Dibromodiphenyl ether	mg/kg	IEC 62321:2013, GC-MS	N.D.	5	--
Tribromodiphenyl ether	mg/kg	IEC 62321:2013, GC-MS	N.D.	5	--
Tetrabromodiphenyl ether	mg/kg	IEC 62321:2013, GC-MS	N.D.	5	--
Pentabromodiphenyl ether	mg/kg	IEC 62321:2013, GC-MS	N.D.	5	--
Hexabromodiphenyl ether	mg/kg	IEC 62321:2013, GC-MS	N.D.	5	--
Heptabromodiphenyl ether	mg/kg	IEC 62321:2013, GC-MS	N.D.	5	--
Octabromodiphenyl ether	mg/kg	IEC 62321:2013, GC-MS	N.D.	5	--
Nonabromodiphenyl ether	mg/kg	IEC 62321:2013, GC-MS	N.D.	5	--
Decabromodiphenyl ether	mg/kg	IEC 62321:2013, GC-MS	N.D.	5	--
DEHP	mg/kg	EN 14372:2005, GC-MS	N.D.	5	1000
DBP	mg/kg	EN 14372:2005, GC-MS	N.D.	5	1000
BBP	mg/kg	EN 14372:2005, GC-MS	N.D.	5	1000
DIBP	mg/kg	EN 14372:2005, GC-MS	N.D.	5	1000



RoHS Test Report

Test Result (No. 7):

Test Item(s)	Unit	Test Method (Reference)	Result	MDL	Limit
Cadmium(Cd)	mg/kg	IEC 62321-5:2013, ICP-AES	N.D.	2	100
Lead(Pb)	mg/kg	IEC 62321-5:2013, ICP-AES	N.D.	2	1000
Mercury(Hg)	mg/kg	IEC 62321-4:2013, ICP-AES	N.D.	2	1000
Hexavalent Chromium(CrVI)	mg/kg	IEC 62321:2013, UV-Vis	N.D.	2	1000
Sum of PBBs	mg/kg	IEC 62321:2013, GC-MS	N.A.	--	1000
Monobromobiphenyl	mg/kg	IEC 62321:2013, GC-MS	N.D.	5	--
Dibromobiphenyl	mg/kg	IEC 62321:2013, GC-MS	N.D.	5	--
Tribromobiphenyl	mg/kg	IEC 62321:2013, GC-MS	N.D.	5	--
Tetrabromobiphenyl	mg/kg	IEC 62321:2013, GC-MS	N.D.	5	--
Pentabromobiphenyl	mg/kg	IEC 62321:2013, GC-MS	N.D.	5	--
Hexabromobiphenyl	mg/kg	IEC 62321:2013, GC-MS	N.D.	5	--
Heptabromobiphenyl	mg/kg	IEC 62321:2013, GC-MS	N.D.	5	--
Octabromobiphenyl	mg/kg	IEC 62321:2013, GC-MS	N.D.	5	--
Nonabromobiphenyl	mg/kg	IEC 62321:2013, GC-MS	N.D.	5	--
Decabromobiphenyl	mg/kg	IEC 62321:2013, GC-MS	N.D.	5	--
Sum of PBDEs	mg/kg	IEC 62321:2013, GC-MS	N.A.	--	1000
Monobromodiphenyl ether	mg/kg	IEC 62321:2013, GC-MS	N.D.	5	--
Dibromodiphenyl ether	mg/kg	IEC 62321:2013, GC-MS	N.D.	5	--
Tribromodiphenyl ether	mg/kg	IEC 62321:2013, GC-MS	N.D.	5	--
Tetrabromodiphenyl ether	mg/kg	IEC 62321:2013, GC-MS	N.D.	5	--
Pentabromodiphenyl ether	mg/kg	IEC 62321:2013, GC-MS	N.D.	5	--
Hexabromodiphenyl ether	mg/kg	IEC 62321:2013, GC-MS	N.D.	5	--
Heptabromodiphenyl ether	mg/kg	IEC 62321:2013, GC-MS	N.D.	5	--
Octabromodiphenyl ether	mg/kg	IEC 62321:2013, GC-MS	N.D.	5	--
Nonabromodiphenyl ether	mg/kg	IEC 62321:2013, GC-MS	N.D.	5	--
Decabromodiphenyl ether	mg/kg	IEC 62321:2013, GC-MS	N.D.	5	--
DEHP	mg/kg	EN 14372:2005, GC-MS	N.A.	5	1000
DBP	mg/kg	EN 14372:2005, GC-MS	N.A.	5	1000
BBP	mg/kg	EN 14372:2005, GC-MS	N.A.	5	1000
DIBP	mg/kg	EN 14372:2005, GC-MS	N.A.	5	1000



RoHS Test Report

Test Result (No. 8):

Test Item(s)	Unit	Test Method (Reference)	Result	MDL	Limit
Cadmium(Cd)	mg/kg	IEC 62321-5:2013, ICP-AES	N.D.	2	100
Lead(Pb)	mg/kg	IEC 62321-5:2013, ICP-AES	N.D.	2	1000
Mercury(Hg)	mg/kg	IEC 62321-4:2013, ICP-AES	N.D.	2	1000
Hexavalent Chromium(CrVI)	mg/kg	IEC 62321:2013, UV-Vis	N.D.	2	1000
Sum of PBBs	mg/kg	IEC 62321:2013, GC-MS	N.A.	--	1000
Monobromobiphenyl	mg/kg	IEC 62321:2013, GC-MS	N.D.	5	--
Dibromobiphenyl	mg/kg	IEC 62321:2013, GC-MS	N.D.	5	--
Tribromobiphenyl	mg/kg	IEC 62321:2013, GC-MS	N.D.	5	--
Tetrabromobiphenyl	mg/kg	IEC 62321:2013, GC-MS	N.D.	5	--
Pentabromobiphenyl	mg/kg	IEC 62321:2013, GC-MS	N.D.	5	--
Hexabromobiphenyl	mg/kg	IEC 62321:2013, GC-MS	N.D.	5	--
Heptabromobiphenyl	mg/kg	IEC 62321:2013, GC-MS	N.D.	5	--
Octabromobiphenyl	mg/kg	IEC 62321:2013, GC-MS	N.D.	5	--
Nonabromobiphenyl	mg/kg	IEC 62321:2013, GC-MS	N.D.	5	--
Decabromobiphenyl	mg/kg	IEC 62321:2013, GC-MS	N.D.	5	--
Sum of PBDEs	mg/kg	IEC 62321:2013, GC-MS	N.A.	--	1000
Monobromodiphenyl ether	mg/kg	IEC 62321:2013, GC-MS	N.D.	5	--
Dibromodiphenyl ether	mg/kg	IEC 62321:2013, GC-MS	N.D.	5	--
Tribromodiphenyl ether	mg/kg	IEC 62321:2013, GC-MS	N.D.	5	--
Tetrabromodiphenyl ether	mg/kg	IEC 62321:2013, GC-MS	N.D.	5	--
Pentabromodiphenyl ether	mg/kg	IEC 62321:2013, GC-MS	N.D.	5	--
Hexabromodiphenyl ether	mg/kg	IEC 62321:2013, GC-MS	N.D.	5	--
Heptabromodiphenyl ether	mg/kg	IEC 62321:2013, GC-MS	N.D.	5	--
Octabromodiphenyl ether	mg/kg	IEC 62321:2013, GC-MS	N.D.	5	--
Nonabromodiphenyl ether	mg/kg	IEC 62321:2013, GC-MS	N.D.	5	--
Decabromodiphenyl ether	mg/kg	IEC 62321:2013, GC-MS	N.D.	5	--
DEHP	mg/kg	EN 14372:2005, GC-MS	N.A.	5	1000
DBP	mg/kg	EN 14372:2005, GC-MS	N.A.	5	1000
BBP	mg/kg	EN 14372:2005, GC-MS	N.A.	5	1000
DIBP	mg/kg	EN 14372:2005, GC-MS	N.A.	5	1000



RoHS Test Report

Test Result (No. 9):

Test Item(s)	Unit	Test Method (Reference)	Result	MDL	Limit
Cadmium(Cd)	mg/kg	IEC 62321-5:2013, ICP-AES	N.D.	2	100
Lead(Pb)	mg/kg	IEC 62321-5:2013, ICP-AES	N.D.	2	1000
Mercury(Hg)	mg/kg	IEC 62321-4:2013, ICP-AES	N.D.	2	1000
Hexavalent Chromium(CrVI)	mg/kg	IEC 62321:2013, UV-Vis	N.D.	2	1000
Sum of PBBs	mg/kg	IEC 62321:2013, GC-MS	N.A.	--	1000
Monobromobiphenyl	mg/kg	IEC 62321:2013, GC-MS	N.D.	5	--
Dibromobiphenyl	mg/kg	IEC 62321:2013, GC-MS	N.D.	5	--
Tribromobiphenyl	mg/kg	IEC 62321:2013, GC-MS	N.D.	5	--
Tetrabromobiphenyl	mg/kg	IEC 62321:2013, GC-MS	N.D.	5	--
Pentabromobiphenyl	mg/kg	IEC 62321:2013, GC-MS	N.D.	5	--
Hexabromobiphenyl	mg/kg	IEC 62321:2013, GC-MS	N.D.	5	--
Heptabromobiphenyl	mg/kg	IEC 62321:2013, GC-MS	N.D.	5	--
Octabromobiphenyl	mg/kg	IEC 62321:2013, GC-MS	N.D.	5	--
Nonabromobiphenyl	mg/kg	IEC 62321:2013, GC-MS	N.D.	5	--
Decabromobiphenyl	mg/kg	IEC 62321:2013, GC-MS	N.D.	5	--
Sum of PBDEs	mg/kg	IEC 62321:2013, GC-MS	N.A.	--	1000
Monobromodiphenyl ether	mg/kg	IEC 62321:2013, GC-MS	N.D.	5	--
Dibromodiphenyl ether	mg/kg	IEC 62321:2013, GC-MS	N.D.	5	--
Tribromodiphenyl ether	mg/kg	IEC 62321:2013, GC-MS	N.D.	5	--
Tetrabromodiphenyl ether	mg/kg	IEC 62321:2013, GC-MS	N.D.	5	--
Pentabromodiphenyl ether	mg/kg	IEC 62321:2013, GC-MS	N.D.	5	--
Hexabromodiphenyl ether	mg/kg	IEC 62321:2013, GC-MS	N.D.	5	--
Heptabromodiphenyl ether	mg/kg	IEC 62321:2013, GC-MS	N.D.	5	--
Octabromodiphenyl ether	mg/kg	IEC 62321:2013, GC-MS	N.D.	5	--
Nonabromodiphenyl ether	mg/kg	IEC 62321:2013, GC-MS	N.D.	5	--
Decabromodiphenyl ether	mg/kg	IEC 62321:2013, GC-MS	N.D.	5	--
DEHP	mg/kg	EN 14372:2005, GC-MS	N.A.	5	1000
DBP	mg/kg	EN 14372:2005, GC-MS	N.A.	5	1000
BBP	mg/kg	EN 14372:2005, GC-MS	N.A.	5	1000
DIBP	mg/kg	EN 14372:2005, GC-MS	N.A.	5	1000



RoHS Test Report

Test Result (No. 10):

Test Item(s)	Unit	Test Method (Reference)	Result	MDL	Limit
Cadmium(Cd)	mg/kg	IEC 62321-5:2013, ICP-AES	N.D.	2	100
Lead(Pb)	mg/kg	IEC 62321-5:2013, ICP-AES	N.D.	2	1000
Mercury(Hg)	mg/kg	IEC 62321-4:2013, ICP-AES	N.D.	2	1000
Hexavalent Chromium(CrVI)	mg/kg	IEC 62321:2013, UV-Vis	N.D.	2	1000
Sum of PBBs	mg/kg	IEC 62321:2013, GC-MS	N.A.	--	1000
Monobromobiphenyl	mg/kg	IEC 62321:2013, GC-MS	N.D.	5	--
Dibromobiphenyl	mg/kg	IEC 62321:2013, GC-MS	N.D.	5	--
Tribromobiphenyl	mg/kg	IEC 62321:2013, GC-MS	N.D.	5	--
Tetrabromobiphenyl	mg/kg	IEC 62321:2013, GC-MS	N.D.	5	--
Pentabromobiphenyl	mg/kg	IEC 62321:2013, GC-MS	N.D.	5	--
Hexabromobiphenyl	mg/kg	IEC 62321:2013, GC-MS	N.D.	5	--
Heptabromobiphenyl	mg/kg	IEC 62321:2013, GC-MS	N.D.	5	--
Octabromobiphenyl	mg/kg	IEC 62321:2013, GC-MS	N.D.	5	--
Nonabromobiphenyl	mg/kg	IEC 62321:2013, GC-MS	N.D.	5	--
Decabromobiphenyl	mg/kg	IEC 62321:2013, GC-MS	N.D.	5	--
Sum of PBDEs	mg/kg	IEC 62321:2013, GC-MS	N.A.	--	1000
Monobromodiphenyl ether	mg/kg	IEC 62321:2013, GC-MS	N.D.	5	--
Dibromodiphenyl ether	mg/kg	IEC 62321:2013, GC-MS	N.D.	5	--
Tribromodiphenyl ether	mg/kg	IEC 62321:2013, GC-MS	N.D.	5	--
Tetrabromodiphenyl ether	mg/kg	IEC 62321:2013, GC-MS	N.D.	5	--
Pentabromodiphenyl ether	mg/kg	IEC 62321:2013, GC-MS	N.D.	5	--
Hexabromodiphenyl ether	mg/kg	IEC 62321:2013, GC-MS	N.D.	5	--
Heptabromodiphenyl ether	mg/kg	IEC 62321:2013, GC-MS	N.D.	5	--
Octabromodiphenyl ether	mg/kg	IEC 62321:2013, GC-MS	N.D.	5	--
Nonabromodiphenyl ether	mg/kg	IEC 62321:2013, GC-MS	N.D.	5	--
Decabromodiphenyl ether	mg/kg	IEC 62321:2013, GC-MS	N.D.	5	--
DEHP	mg/kg	EN 14372:2005, GC-MS	N.A.	5	1000
DBP	mg/kg	EN 14372:2005, GC-MS	N.A.	5	1000
BBP	mg/kg	EN 14372:2005, GC-MS	N.A.	5	1000
DIBP	mg/kg	EN 14372:2005, GC-MS	N.A.	5	1000



RoHS Test Report

Test Result (No. 11):

Test Item(s)	Unit	Test Method (Reference)	Result	MDL	Limit
Cadmium(Cd)	mg/kg	IEC 62321-5:2013, ICP-AES	N.D.	2	100
Lead(Pb)	mg/kg	IEC 62321-5:2013, ICP-AES	N.D.	2	1000
Mercury(Hg)	mg/kg	IEC 62321-4:2013, ICP-AES	N.D.	2	1000
Hexavalent Chromium(CrVI)	mg/kg	IEC 62321:2013, UV-Vis	N.D.	2	1000
Sum of PBBs	mg/kg	IEC 62321:2013, GC-MS	N.A.	--	1000
Monobromobiphenyl	mg/kg	IEC 62321:2013, GC-MS	N.D.	5	--
Dibromobiphenyl	mg/kg	IEC 62321:2013, GC-MS	N.D.	5	--
Tribromobiphenyl	mg/kg	IEC 62321:2013, GC-MS	N.D.	5	--
Tetrabromobiphenyl	mg/kg	IEC 62321:2013, GC-MS	N.D.	5	--
Pentabromobiphenyl	mg/kg	IEC 62321:2013, GC-MS	N.D.	5	--
Hexabromobiphenyl	mg/kg	IEC 62321:2013, GC-MS	N.D.	5	--
Heptabromobiphenyl	mg/kg	IEC 62321:2013, GC-MS	N.D.	5	--
Octabromobiphenyl	mg/kg	IEC 62321:2013, GC-MS	N.D.	5	--
Nonabromobiphenyl	mg/kg	IEC 62321:2013, GC-MS	N.D.	5	--
Decabromobiphenyl	mg/kg	IEC 62321:2013, GC-MS	N.D.	5	--
Sum of PBDEs	mg/kg	IEC 62321:2013, GC-MS	N.A.	--	1000
Monobromodiphenyl ether	mg/kg	IEC 62321:2013, GC-MS	N.D.	5	--
Dibromodiphenyl ether	mg/kg	IEC 62321:2013, GC-MS	N.D.	5	--
Tribromodiphenyl ether	mg/kg	IEC 62321:2013, GC-MS	N.D.	5	--
Tetrabromodiphenyl ether	mg/kg	IEC 62321:2013, GC-MS	N.D.	5	--
Pentabromodiphenyl ether	mg/kg	IEC 62321:2013, GC-MS	N.D.	5	--
Hexabromodiphenyl ether	mg/kg	IEC 62321:2013, GC-MS	N.D.	5	--
Heptabromodiphenyl ether	mg/kg	IEC 62321:2013, GC-MS	N.D.	5	--
Octabromodiphenyl ether	mg/kg	IEC 62321:2013, GC-MS	N.D.	5	--
Nonabromodiphenyl ether	mg/kg	IEC 62321:2013, GC-MS	N.D.	5	--
Decabromodiphenyl ether	mg/kg	IEC 62321:2013, GC-MS	N.D.	5	--
DEHP	mg/kg	EN 14372:2005, GC-MS	N.A.	5	1000
DBP	mg/kg	EN 14372:2005, GC-MS	N.A.	5	1000
BBP	mg/kg	EN 14372:2005, GC-MS	N.A.	5	1000
DIBP	mg/kg	EN 14372:2005, GC-MS	N.A.	5	1000



RoHS Test Report

Test Result (No. 12):

Test Item(s)	Unit	Test Method (Reference)	Result	MDL	Limit
Cadmium(Cd)	mg/kg	IEC 62321-5:2013, ICP-AES	N.D.	2	100
Lead(Pb)	mg/kg	IEC 62321-5:2013, ICP-AES	N.D.	2	1000
Mercury(Hg)	mg/kg	IEC 62321-4:2013, ICP-AES	N.D.	2	1000
Hexavalent Chromium(CrVI)	mg/kg	IEC 62321:2013, UV-Vis	N.D.	2	1000
Sum of PBBs	mg/kg	IEC 62321:2013, GC-MS	N.A.	--	1000
Monobromobiphenyl	mg/kg	IEC 62321:2013, GC-MS	N.D.	5	--
Dibromobiphenyl	mg/kg	IEC 62321:2013, GC-MS	N.D.	5	--
Tribromobiphenyl	mg/kg	IEC 62321:2013, GC-MS	N.D.	5	--
Tetrabromobiphenyl	mg/kg	IEC 62321:2013, GC-MS	N.D.	5	--
Pentabromobiphenyl	mg/kg	IEC 62321:2013, GC-MS	N.D.	5	--
Hexabromobiphenyl	mg/kg	IEC 62321:2013, GC-MS	N.D.	5	--
Heptabromobiphenyl	mg/kg	IEC 62321:2013, GC-MS	N.D.	5	--
Octabromobiphenyl	mg/kg	IEC 62321:2013, GC-MS	N.D.	5	--
Nonabromobiphenyl	mg/kg	IEC 62321:2013, GC-MS	N.D.	5	--
Decabromobiphenyl	mg/kg	IEC 62321:2013, GC-MS	N.D.	5	--
Sum of PBDEs	mg/kg	IEC 62321:2013, GC-MS	N.A.	--	1000
Monobromodiphenyl ether	mg/kg	IEC 62321:2013, GC-MS	N.D.	5	--
Dibromodiphenyl ether	mg/kg	IEC 62321:2013, GC-MS	N.D.	5	--
Tribromodiphenyl ether	mg/kg	IEC 62321:2013, GC-MS	N.D.	5	--
Tetrabromodiphenyl ether	mg/kg	IEC 62321:2013, GC-MS	N.D.	5	--
Pentabromodiphenyl ether	mg/kg	IEC 62321:2013, GC-MS	N.D.	5	--
Hexabromodiphenyl ether	mg/kg	IEC 62321:2013, GC-MS	N.D.	5	--
Heptabromodiphenyl ether	mg/kg	IEC 62321:2013, GC-MS	N.D.	5	--
Octabromodiphenyl ether	mg/kg	IEC 62321:2013, GC-MS	N.D.	5	--
Nonabromodiphenyl ether	mg/kg	IEC 62321:2013, GC-MS	N.D.	5	--
Decabromodiphenyl ether	mg/kg	IEC 62321:2013, GC-MS	N.D.	5	--
DEHP	mg/kg	EN 14372:2005, GC-MS	N.A.	5	1000
DBP	mg/kg	EN 14372:2005, GC-MS	N.A.	5	1000
BBP	mg/kg	EN 14372:2005, GC-MS	N.A.	5	1000
DIBP	mg/kg	EN 14372:2005, GC-MS	N.A.	5	1000



RoHS Test Report

Test Result (No. 13):

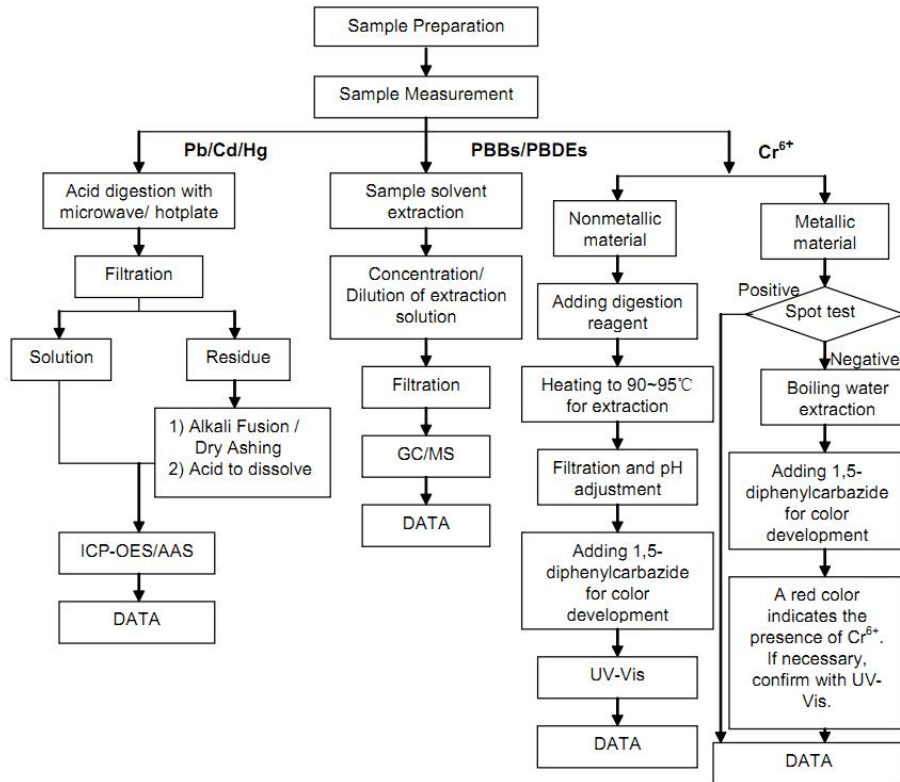
Test Item(s)	Unit	Test Method (Reference)	Result	MDL	Limit
Cadmium(Cd)	mg/kg	IEC 62321-5:2013, ICP-AES	N.D.	2	100
Lead(Pb)	mg/kg	IEC 62321-5:2013, ICP-AES	N.D.	2	1000
Mercury(Hg)	mg/kg	IEC 62321-4:2013, ICP-AES	N.D.	2	1000
Hexavalent Chromium(CrVI)	mg/kg	IEC 62321:2013, UV-Vis	N.D.	2	1000
Sum of PBBs	mg/kg	IEC 62321:2013, GC-MS	N.A.	--	1000
Monobromobiphenyl	mg/kg	IEC 62321:2013, GC-MS	N.D.	5	--
Dibromobiphenyl	mg/kg	IEC 62321:2013, GC-MS	N.D.	5	--
Tribromobiphenyl	mg/kg	IEC 62321:2013, GC-MS	N.D.	5	--
Tetrabromobiphenyl	mg/kg	IEC 62321:2013, GC-MS	N.D.	5	--
Pentabromobiphenyl	mg/kg	IEC 62321:2013, GC-MS	N.D.	5	--
Hexabromobiphenyl	mg/kg	IEC 62321:2013, GC-MS	N.D.	5	--
Heptabromobiphenyl	mg/kg	IEC 62321:2013, GC-MS	N.D.	5	--
Octabromobiphenyl	mg/kg	IEC 62321:2013, GC-MS	N.D.	5	--
Nonabromobiphenyl	mg/kg	IEC 62321:2013, GC-MS	N.D.	5	--
Decabromobiphenyl	mg/kg	IEC 62321:2013, GC-MS	N.D.	5	--
Sum of PBDEs	mg/kg	IEC 62321:2013, GC-MS	N.A.	--	1000
Monobromodiphenyl ether	mg/kg	IEC 62321:2013, GC-MS	N.D.	5	--
Dibromodiphenyl ether	mg/kg	IEC 62321:2013, GC-MS	N.D.	5	--
Tribromodiphenyl ether	mg/kg	IEC 62321:2013, GC-MS	N.D.	5	--
Tetrabromodiphenyl ether	mg/kg	IEC 62321:2013, GC-MS	N.D.	5	--
Pentabromodiphenyl ether	mg/kg	IEC 62321:2013, GC-MS	N.D.	5	--
Hexabromodiphenyl ether	mg/kg	IEC 62321:2013, GC-MS	N.D.	5	--
Heptabromodiphenyl ether	mg/kg	IEC 62321:2013, GC-MS	N.D.	5	--
Octabromodiphenyl ether	mg/kg	IEC 62321:2013, GC-MS	N.D.	5	--
Nonabromodiphenyl ether	mg/kg	IEC 62321:2013, GC-MS	N.D.	5	--
Decabromodiphenyl ether	mg/kg	IEC 62321:2013, GC-MS	N.D.	5	--
DEHP	mg/kg	EN 14372:2005, GC-MS	N.A.	5	1000
DBP	mg/kg	EN 14372:2005, GC-MS	N.A.	5	1000
BBP	mg/kg	EN 14372:2005, GC-MS	N.A.	5	1000
DIBP	mg/kg	EN 14372:2005, GC-MS	N.A.	5	1000



RoHS Test Report

- Note:**
1. mg/kg= ppm
 2. N.D.= Not Detected(<MDL)
 3. MDL = Method Detection Limit
 4. -- = No Testing

Testing Flow Chart (Pb, Cd, Hg, Cr⁶⁺, PBBs, PBDEs):



Testing Flow Chart (DEHP, DBP, BBP, DIBP):



RoHS Test Report

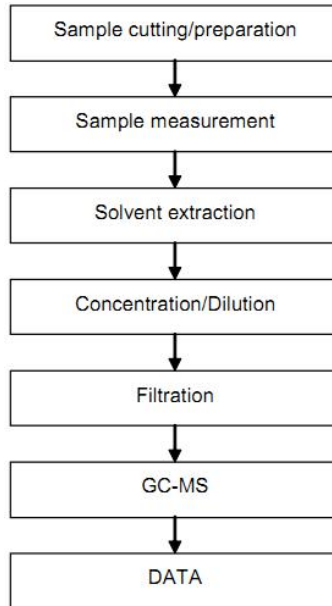
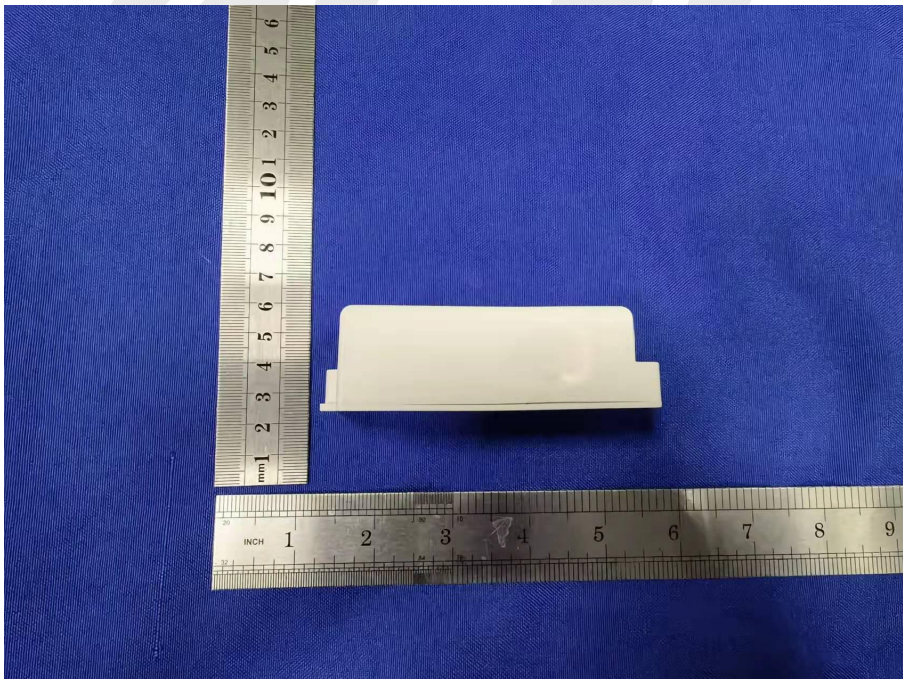
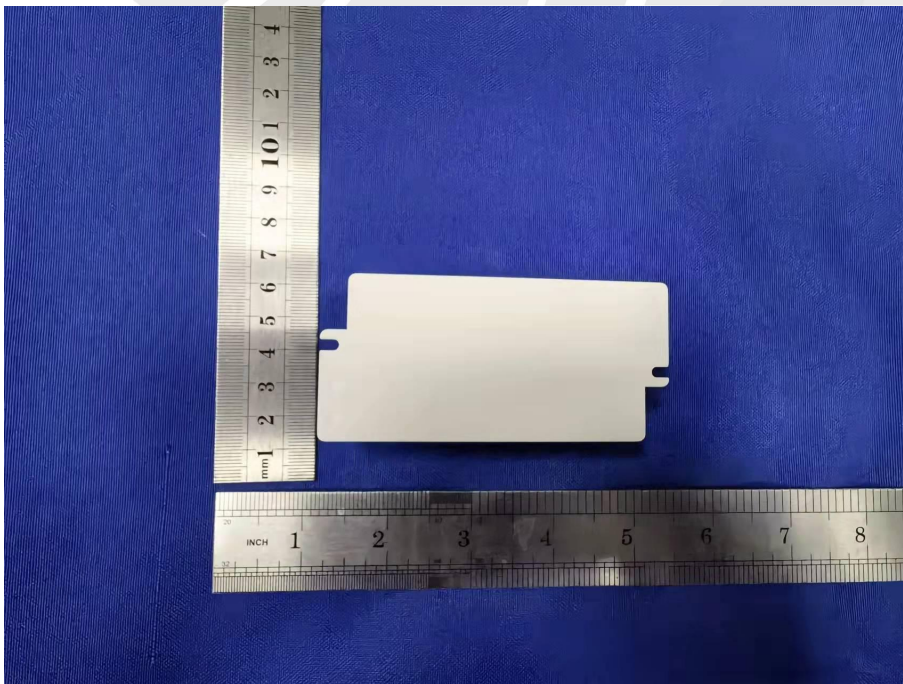


Photo of Sample:



RoHS Test Report



*** End of Report***

